

Consistency of Spectral Algorithms for Hypergraphs under Planted Partition Model

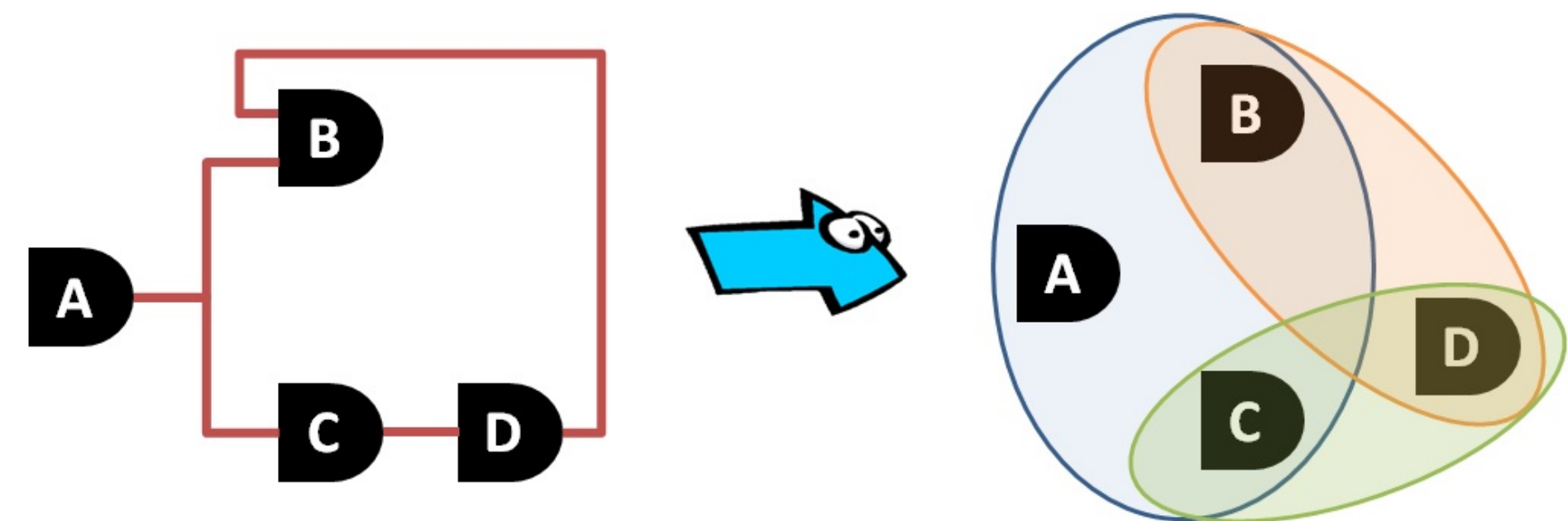
Debaghya Ghoshdastidar (Ph.D. - 4th year)

Advisor: Prof. Ambedkar Dukkipati

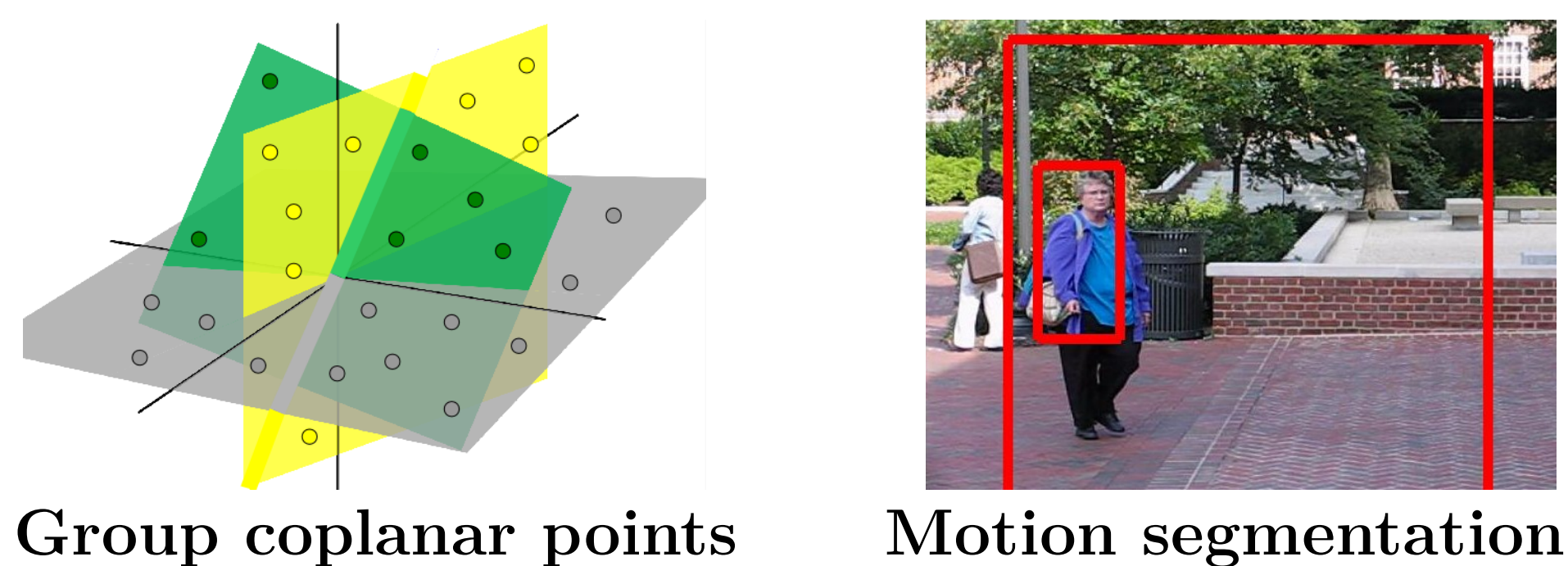
Department of Computer Science & Automation, Indian Institute of Science

Hypergraphs and Clustering

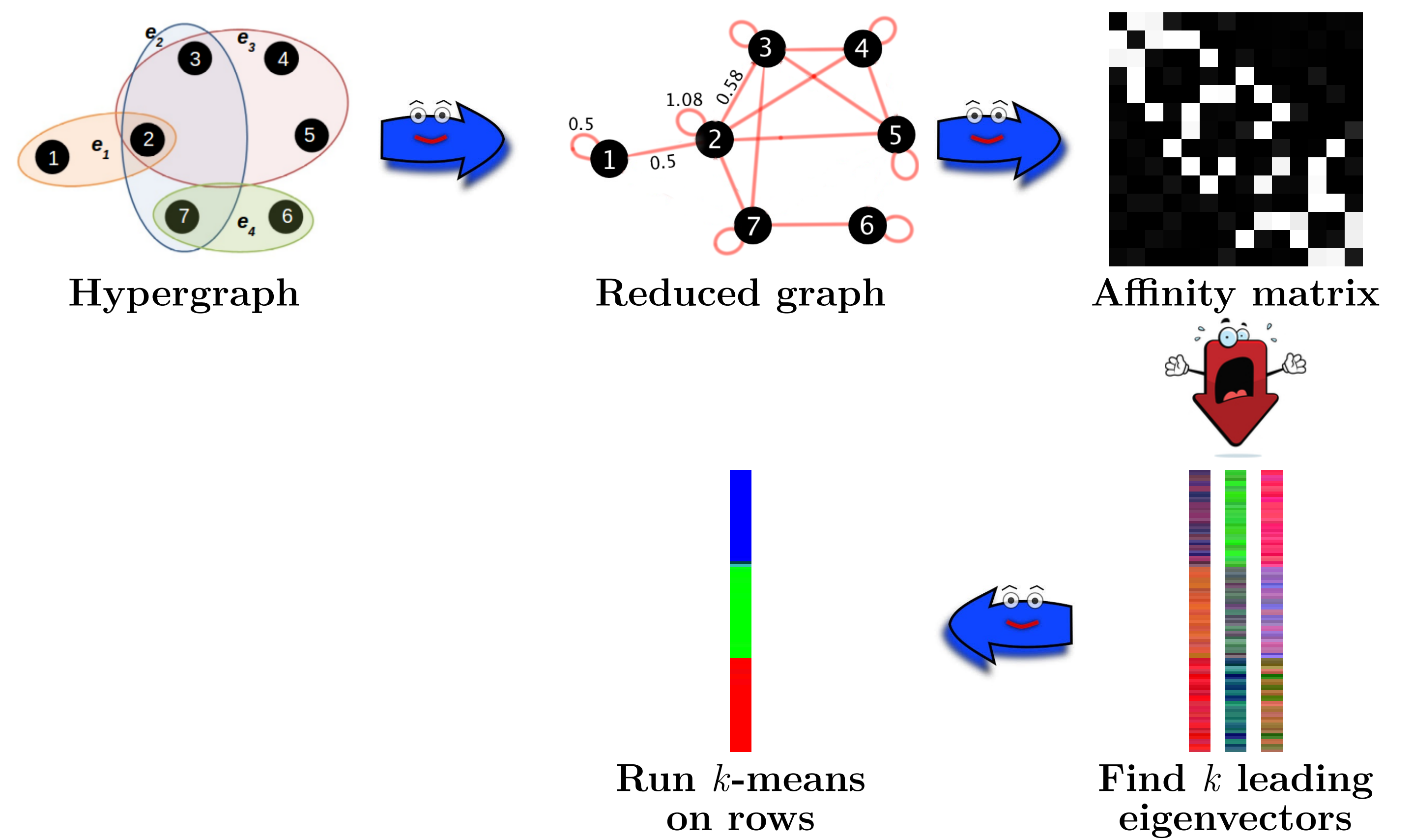
Circuit partitioning for VLSI design:



Subspace clustering and applications:



Spectral Hypergraph Partitioning



Consistency of Hypergraph Partitioning

Planted partition model (special case)

- m -uniform hypergraph on n nodes
- k unknown classes of equal size, $k = O\left(\frac{n^{1/4}}{\log n}\right)$
- Edge prob. within class = p (unknown)
- Edge prob. across classes = $q < p$ (unknown)

Graphs ($m = 2$) – Spectral clustering

- Extensively studied [Rohe et al '11; Lei & Rinaldo'15]
- %error $\rightarrow 0$ as $n \rightarrow \infty$ (weak consistency)

$$\text{No. of misclustered nodes} = O\left(\frac{n^{1/2}}{(\log n)^2}\right)$$

Algorithms studied in our works

HOSVD

[Govindu '05]

- Based on tensor decomposition
- Applicable only for uniform hypergraphs

$$\text{No. of misclustered vertices} = O\left(\frac{n^{(4-m)/2}}{(\log n)^{2m-1}}\right)$$

NH-Cut

[Bolla '93; Zhou et al '07]

- Minimizes hypergraph cut
- Can tackle non-uniform hypergraphs

$$\text{No. of misclustered vertices} = O\left(\frac{n^{(3-m)/2}}{(\log n)^{2m-3}}\right)$$

TTM / TTM-ext

[proposed]

- Maximizes hypergraph associativity
- Partitions uniform / non-uniform hypergraphs
- Unifies several higher order learning methods

$$\text{No. of misclustered vertices} = O\left(\frac{n^{(3-m)/2}}{(\log n)^{2m-3}}\right)$$

Tetris

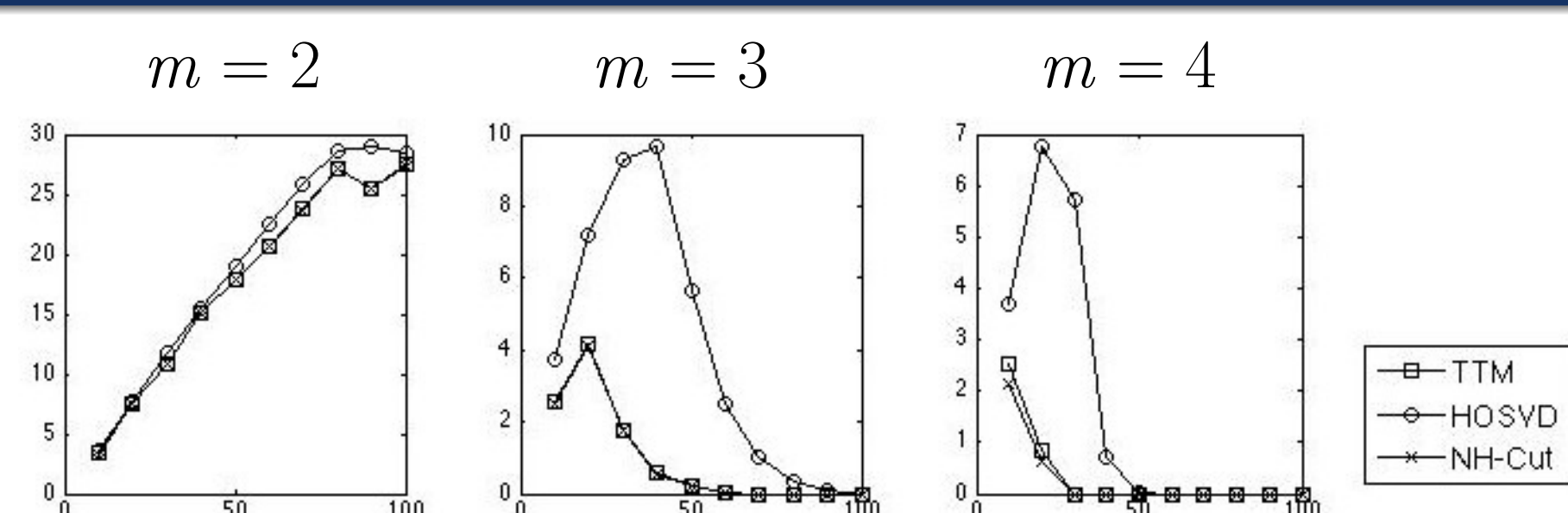
[proposed]

- Computationally efficient variant of TTM
- Applicable only for weighted hypergraphs
- Partitions using only few sampled edges

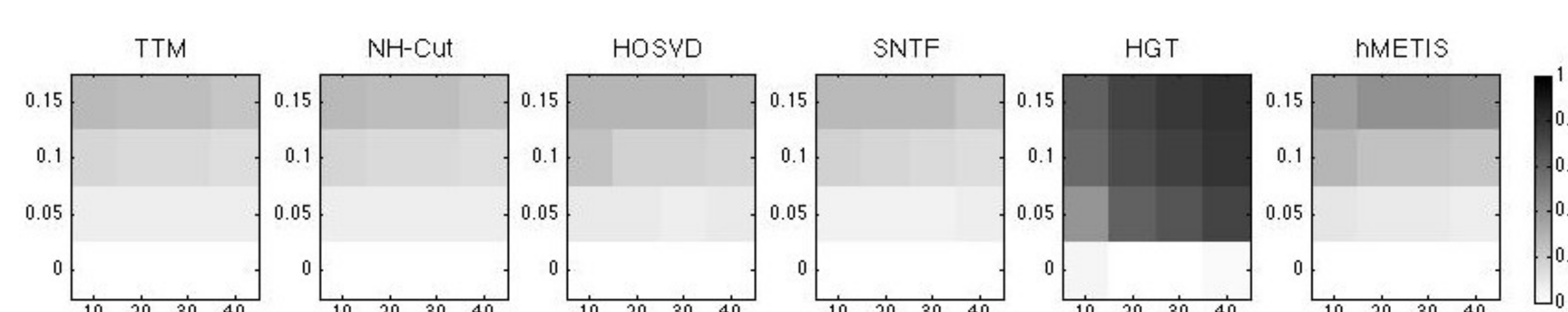
$$\text{Consistency for edge sampling ratio} = \Omega\left(\frac{n^{(1.5-m)/2}}{(\log n)^{2m-3}}\right)$$

- Retrieves graph results for $m = 2$; but for $m > 2$, error $\rightarrow 0$ as $n \rightarrow \infty$ (strong consistency)

Empirical Studies



Variation of error for HOSVD, TTM and NH-Cut with increase in n under planted partition model



Fractional error incurred by hypergraph partitioning algorithms in clustering noisy points from three intersecting lines when the cluster size n/k (horizontal), and the noise level (vertical) are varied

Algorithm	Mean error (%)	Time (sec)
k -means	19.58	0.03
k -flats	13.19	0.38
SSC	1.53	0.80
LRR	2.13	0.94
SSC-OMP	16.93	0.72
TSC	18.44	0.19
NSN+Spec	3.62	0.08
SCC	2.53	0.45
SGC	3.50	0.54
Tetris	1.31	0.50

Performance on 2 motion videos in Hopkins dataset

References

- M. Bolla. *Discrete Mathematics* 117(3). 1993.
- V. M. Govindu. In *CVPR*. 2005.
- D. Zhou, J. Huang & B. Schölkopf. In *NIPS*. 2007.

- K. Rohe, S. Chatterjee & B. Yu. *Annals of Statistics* 39(4). 2011.
- D. Ghoshdastidar and A. Dukkipati. In *NIPS*. 2014.
- J. Lei & A. Rinaldo. *Annals of Statistics* 43(1). 2015.

- D. Ghoshdastidar and A. Dukkipati. In *ICML*. 2015.
- D. Ghoshdastidar and A. Dukkipati. *Annals of Statistics* (in press). arXiv: 1505.01582.
- D. Ghoshdastidar and A. Dukkipati. *Manuscript submitted*. arXiv: 1602.06516.